



MODULE INDUSTRIES ULC.
 P.O. BOX 190
 1175 RAILWAY STREET
 PENICTON, B.C. V2A 6K3
 (250) 493-0122

DRAWN BY: RGS

DATE: 07/07/15

CHECKED BY:

NO. REVISIONS:

INITIALS:

DATE:

TITLE:

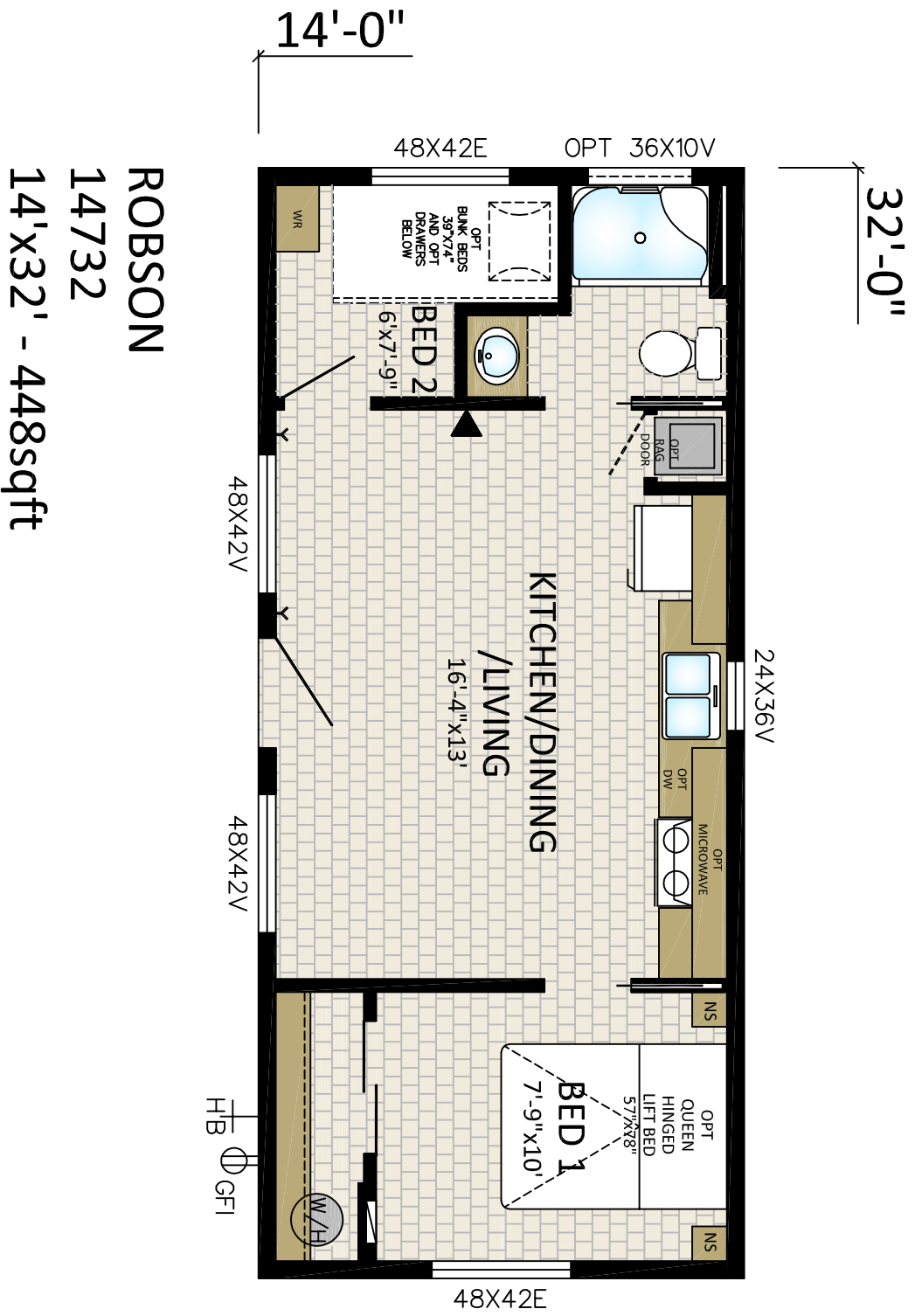
PARK CABIN

DRAWING NO. PENICTON

14732

SERIAL NO.

ROBSON



14'-0"

32'-0"

48X42E OPT 36X10V

24X36V

KITCHEN/DINING
 /LIVING
 16'-4" x 13'

BED 2
 6' x 7'-9"

BED 1
 7'-9" x 10'

48X42E

W/H
 GFI

48X42V

48X42V

OPT
 BUNK BEDS
 35'X7'4"
 AND OPT
 DRAWERS
 BELOW

OPT
 RAG
 DOOR

OPT
 MICROWAVE

OPT
 DW

OPT
 QUEEN
 HINGED
 LIFT BED
 57'X78"

NS

NS

W/R

W/H