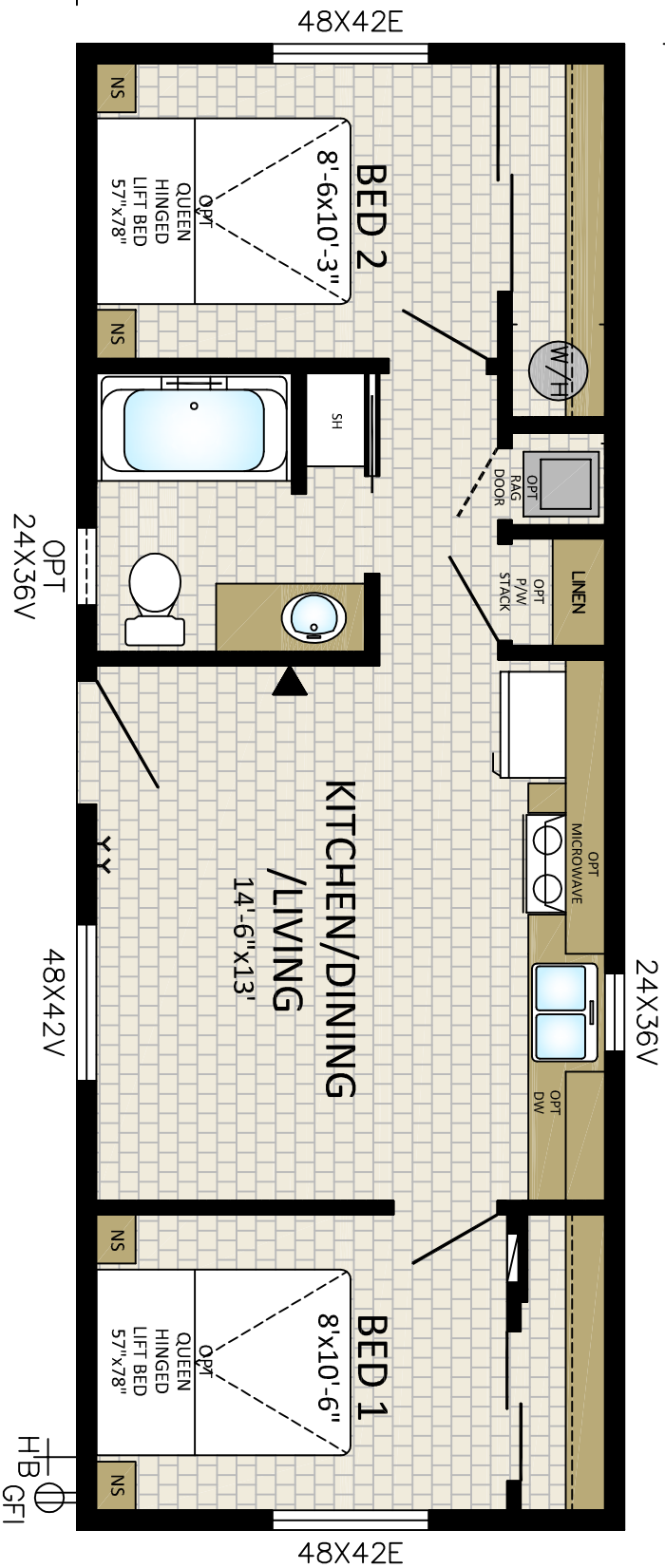


38'-0"

14'-0"



KOOTENAY

14738

14'x38' - 532sqft

MODULINE INTERNATIONAL INC.
 P.O. BOX 190
 1775 RAILWAY STREET
 PENTICTON, B.C. V2A 6K3
 (250) 493-0722

DRAWN BY: RGS
DATE: 07/07/15
CHECKED BY:

NO.	REVISIONS:	INITIALS:	DATE:

TITLE:	PARK CABIN	SERIAL NO.:	KOOTENAY
DRAWING NO.:	PENTICTON	14738	