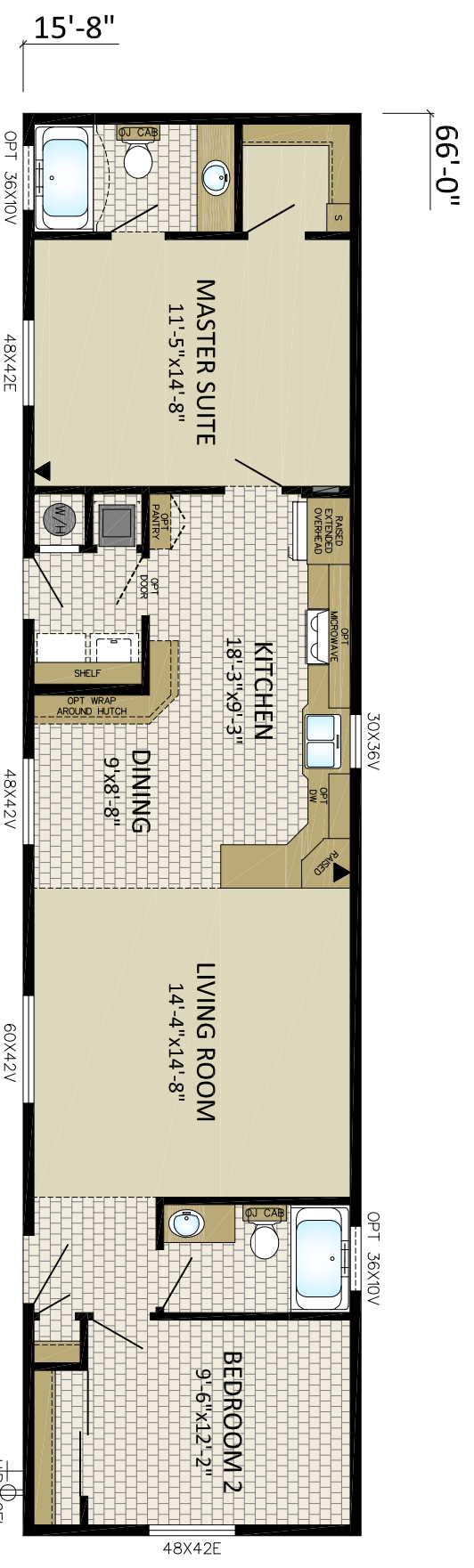




OPTIONAL MIRROR BACK END



16C06602
15'-8" x 66' - 1034sqft



MODULELINE INTERNATIONAL INC.
P.O. BOX 190
1775 RAILWAY STREET
PENTICTON, B.C. V2A 6K3
(250) 493-0122

DRAWN BY: J.B.T.
DATE: 8-06-15
CHECKED BY:

NO.	REVISIONS:	INITIALS:	DATE:

TITLE: CORNERSTONE
DRAWING NO. PENTICTON
16C06602
SERIAL NO. STANDARD