

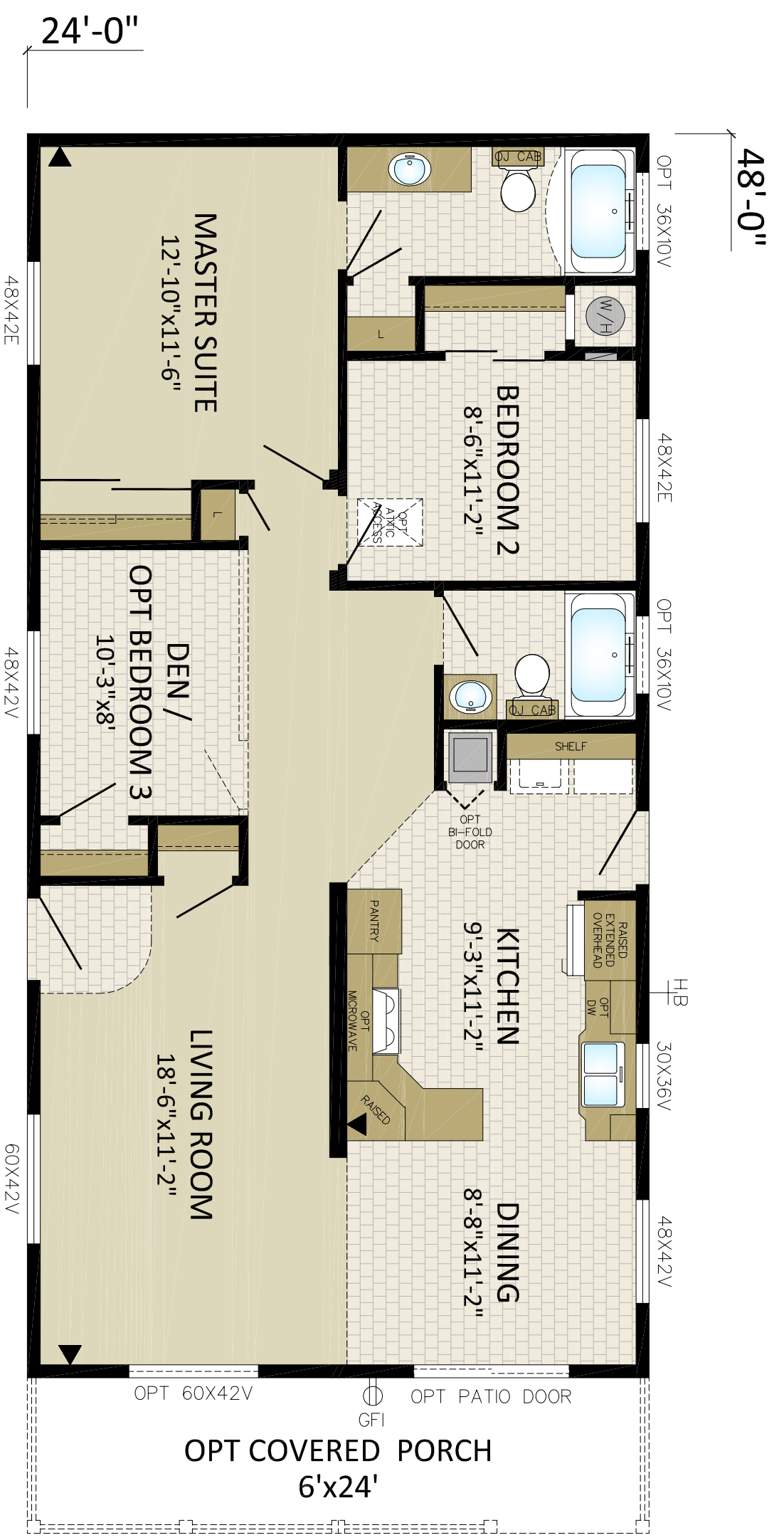
MODULINE INDUSTRIES U.L.C.
 P.O. BOX 190
 1175 RAILWAY STREET
 PENICHTON, B.C. V2A 6K3
 (250) 493-0122

DRAWN BY: RGS
 DATE: 09/04/15
 CHECKED BY:

NO.	REVISIONS:	INITIALS:	DATE:

TITLE: **CORNERSTONE**
 DRAWING NO. PENICHTON
24CO4802
 SERIAL NO.
STANDARD

24CO4802
24'x48' - 1152sqft



48'-0"

24'-0"

OPT COVERED PORCH
6'x24'