



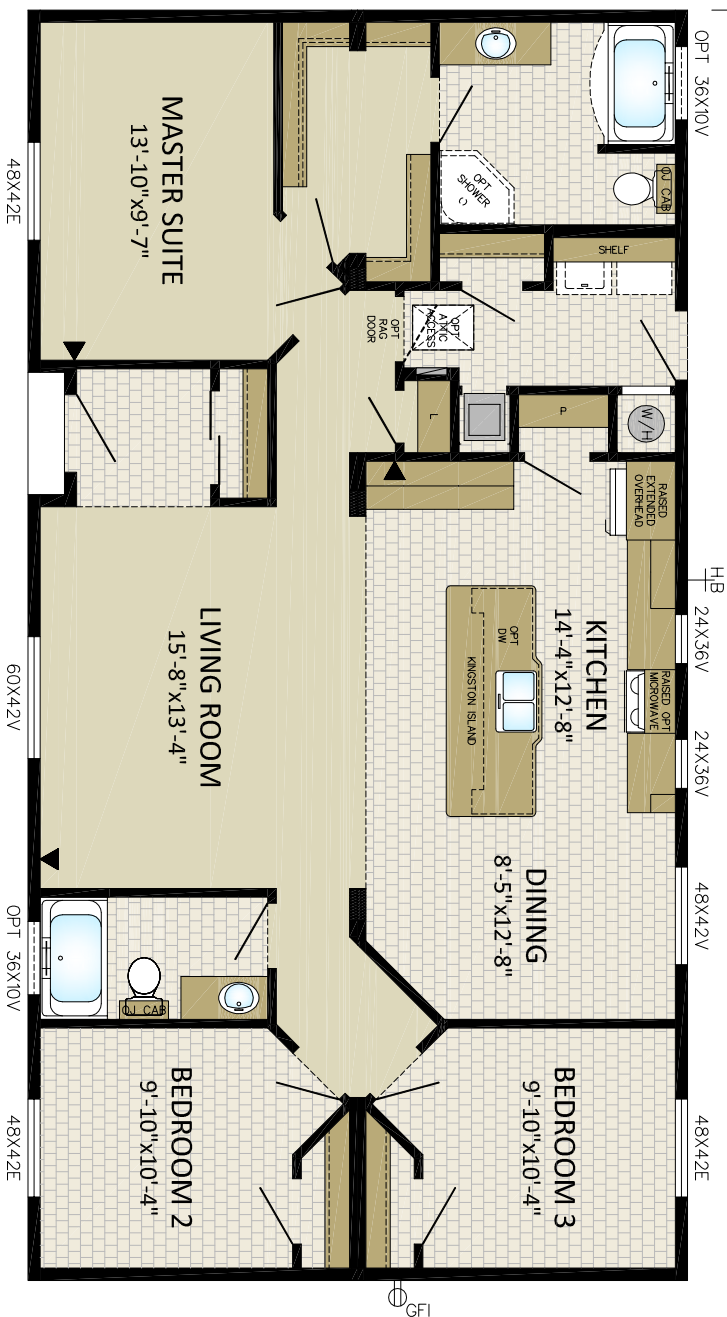
MODULINE INDUSTRIES ULC.
 P.O. BOX 190
 1175 RAILWAY STREET
 PENNINGTON, B.C. V2A 6K3
 (250) 493-0122

DRAWN BY: RGS
 DATE: 10/05/15
 CHECKED BY:

NO.	REVISIONS:	INITIALS:	DATE:

TITLE: **CORNERSTONE**
 DRAWING NO. PENNINGTON
27C05201
 SERIAL NO. STANDARD

27'-0"



27C05201
27'x52' - 1404sqft
52'-0"

