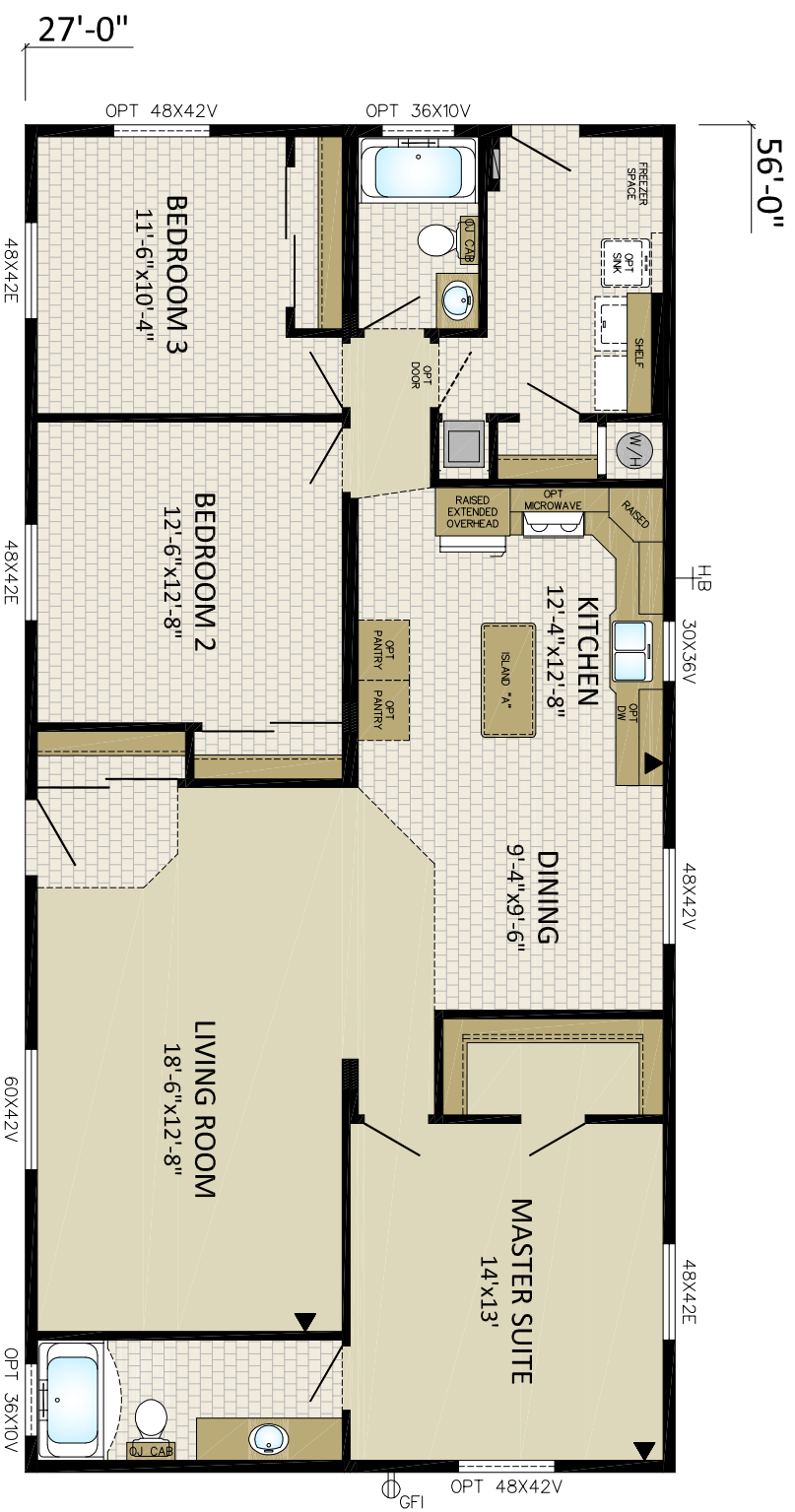


27C05601
27'x56' - 1512sqft



MODULINE INDUSTRIES ULC.
P.O. BOX 190
1175 RAILWAY STREET
PENICTON, B.C. V2A 6K3
(250) 493-0122

DRAWN BY: RGS
DATE: 10/05/15
CHECKED BY:

NO.	REVISIONS:	INITIALS:	DATE:

TITLE: **CORNERSTONE**
DRAWING NO. PENICTON
27C05601
SERIAL NO. **STANDARD**