



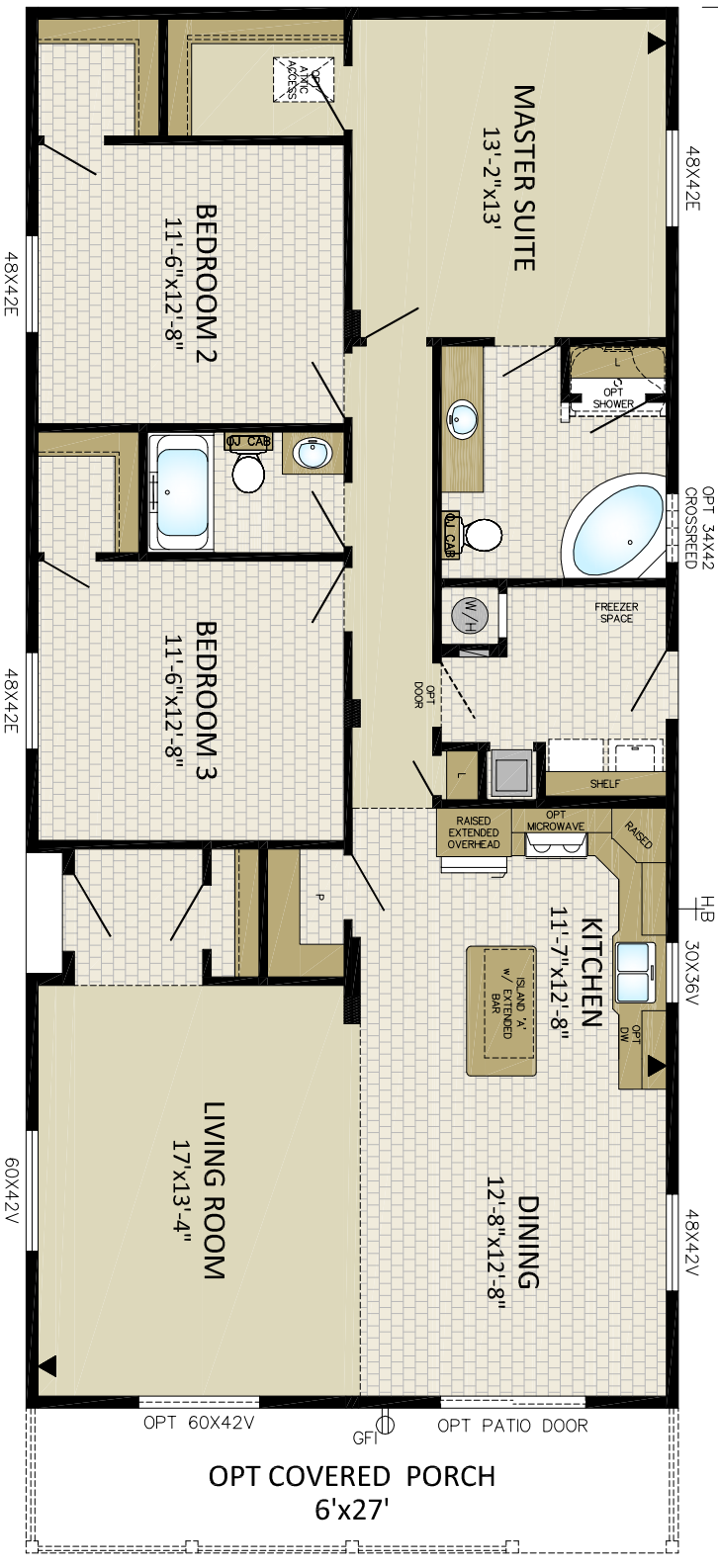
MODULENE INTERNATIONAL INC.
 P.O. BOX 190
 1175 RAILWAY STREET
 PENICTON, B.C. V2A 6K3
 (250) 493-0122

DRAWN BY: RGS
 DATE: 09/04/15
 CHECKED BY:

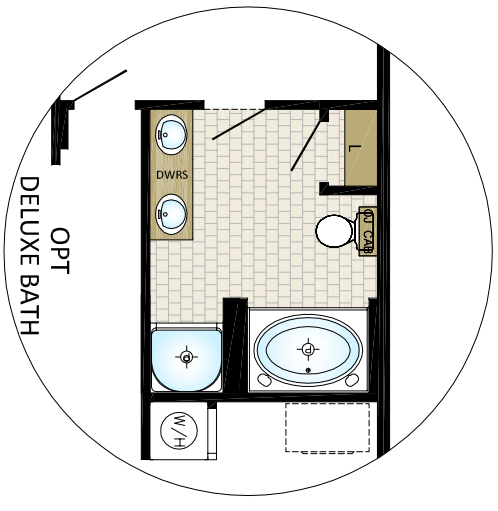
NO.	REVISIONS:	INITIALS:	DATE:

TITLE: **CORNERSTONE**
 DRAWING NO. PENICTON
27C05801
 SERIAL NO. **STANDARD**

27'-0"



27C05801
 27'x58' - 1566sqft
 58'-0"



move utility & kitchen
 2ft into dining