



**MODULELINE INDUSTRIES U.L.C.**  
 P.O. BOX 190  
 1175 RAILWAY STREET  
 PENICHTON, BC, V2A 6K3  
 (250) 493-0122

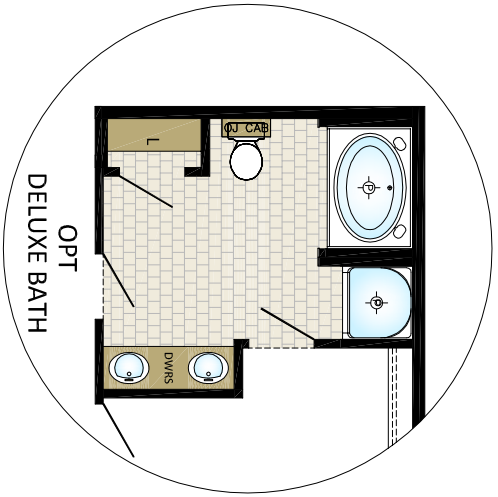
DRAWN BY: RGS  
 DATE: 10/05/15  
 CHECKED BY:

NO.	REVISIONS:	INITIALS:	DATE:

**TITLE: CORNERSTONE**  
 DRAWING NO. PENICHTON  
**27C06002**  
 SERIAL NO.  
**STANDARD**



**27C06002**  
**27'x60' - 1620sqft**



requires  
 2ft stretch option