

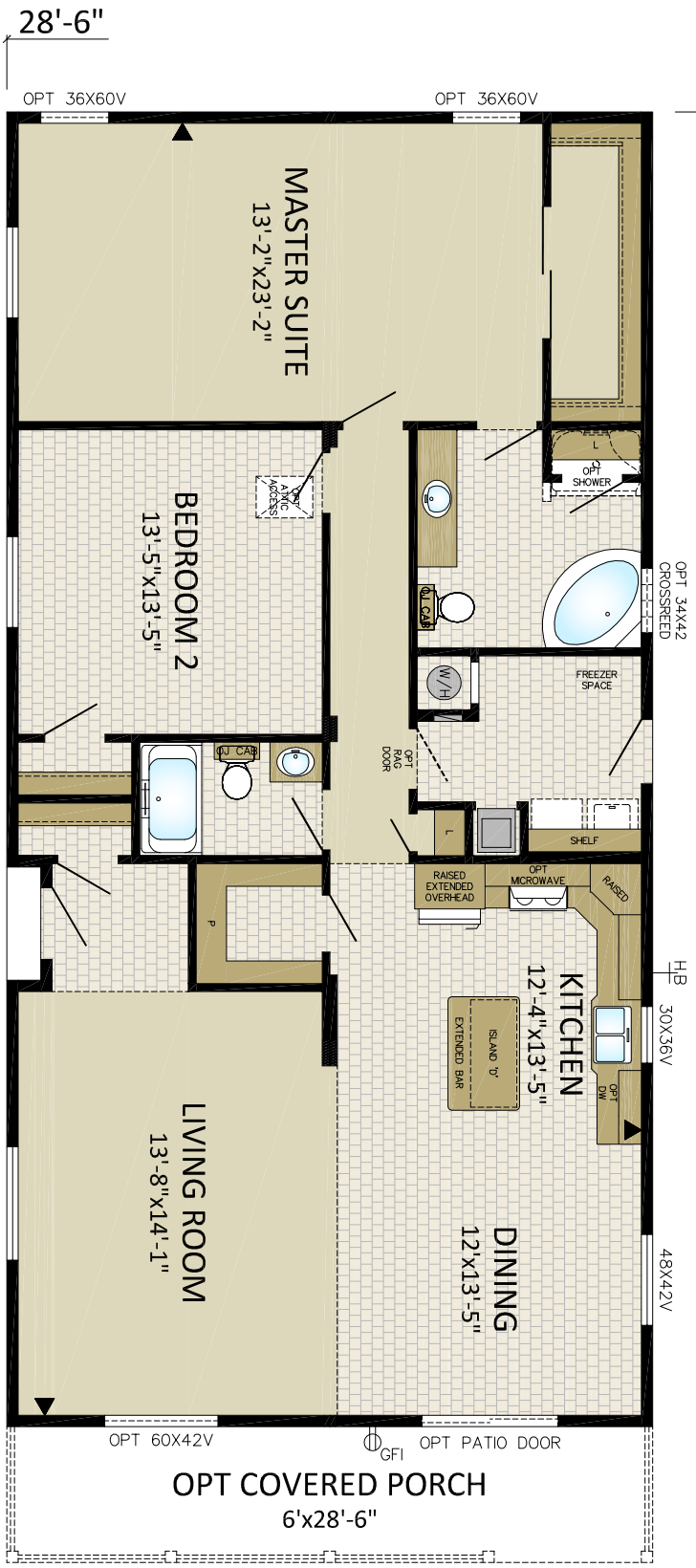


MODULENE INTERNATIONAL INC.
 P.O. BOX 190
 1175 RAILWAY STREET
 PENICTON, B.C. V2A 6K3
 (250) 493-0122

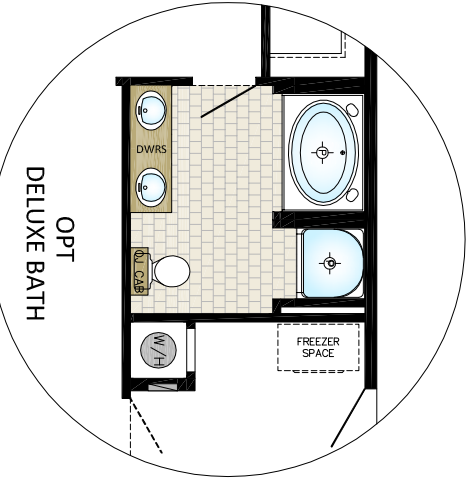
DRAWN BY: RGS
 DATE: 10/05/15
 CHECKED BY:

NO.	REVISIONS:	INITIALS:	DATE:

TITLE: **CORNERSTONE**
 DRAWING NO. PENICTON
30C05801
 SERIAL NO. STANDARD



30C05801
 28'-6" x 58' - 1653sqft



OPT
 DELUXE BATH