

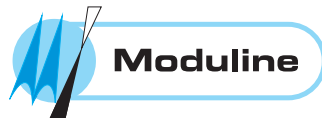
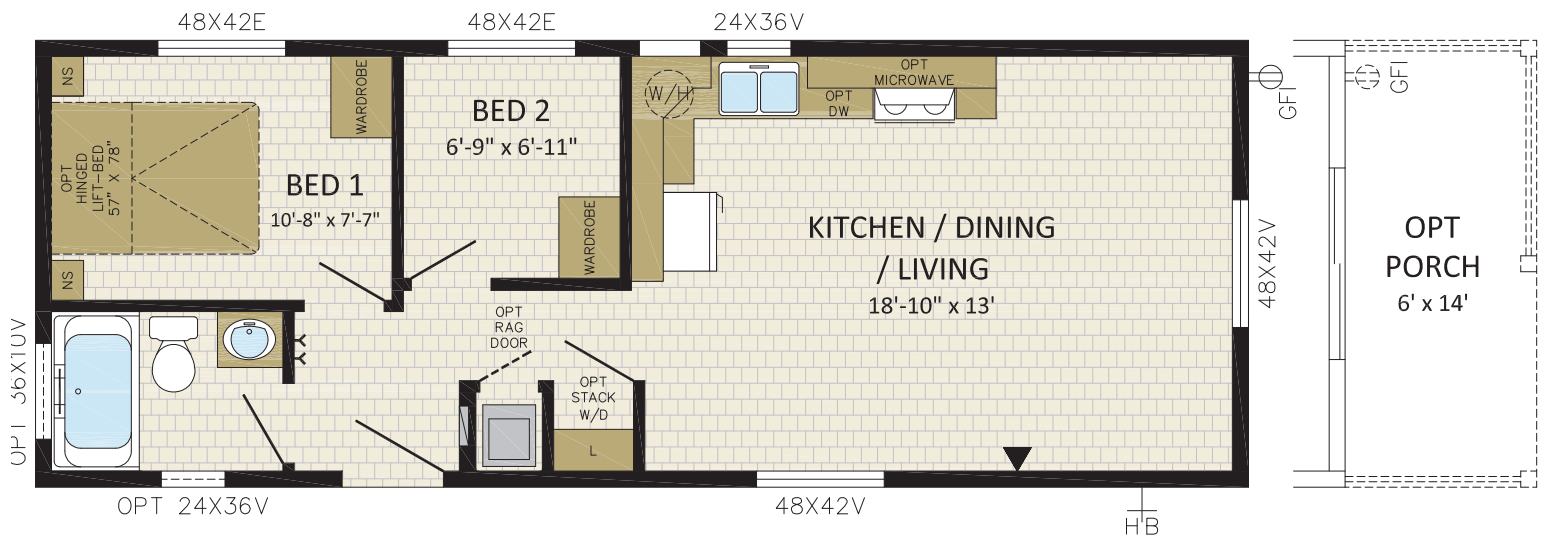
Pacific Cabins

Proud To Be
CANADIAN!



Cascade

14'X 38' | 532 SQFT | 14737
2 BDRM | 1 BATH | FRONT LR



Follow us: [f](#) [t](#)

P.O. Box 190 1175 Railway Street Penticton, B.C. V2A 6J9 Phone (250) 493-0122 Fax (250) 493-0133
In a continued effort to meet the challenges of product improvement, we reserve the right to modify plans, specifications and features without prior notice.
Some homes may show optional items which are not standard. Please consult your dealer representative for details. Square footage and room sizes are approximate.