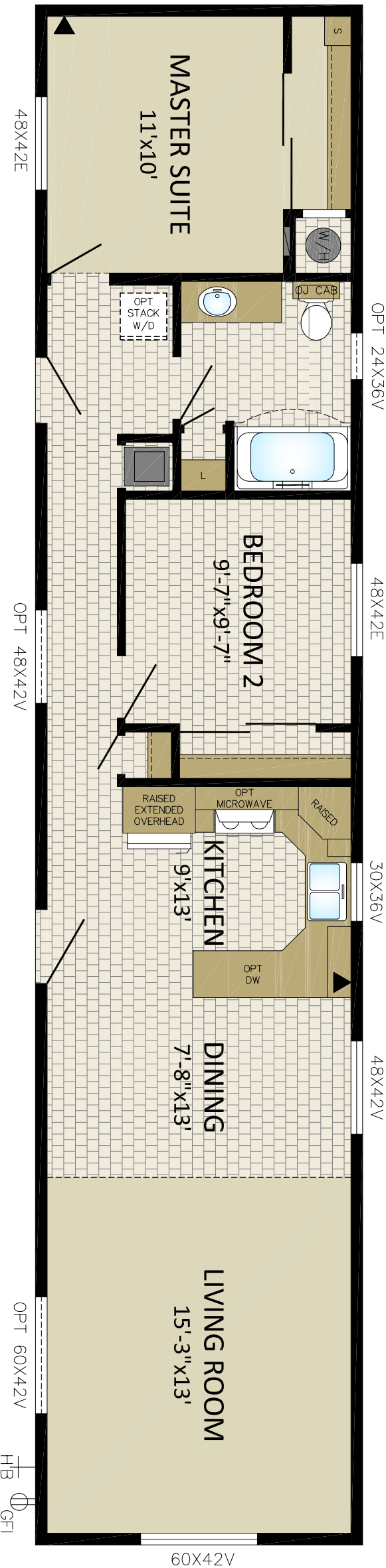


66'-0"

14'-0"

14CO6606
14'x66' - 924sqft



MODULINE INTERNATIONAL INC.
P.O. BOX 190
1175 RAILWAY STREET
PENTICTON, B.C. V2A 6K3
(250) 493-0122

DRAWN BY: J.B.T.

DATE: 5-22-15

CHECKED BY:

NO.

REVISIONS:

INITIALS:

DATE:

TITLE: CORNERSTONE

DRAWING NO. PENTICTON

14CO6606

SERIAL NO.

STANDARD