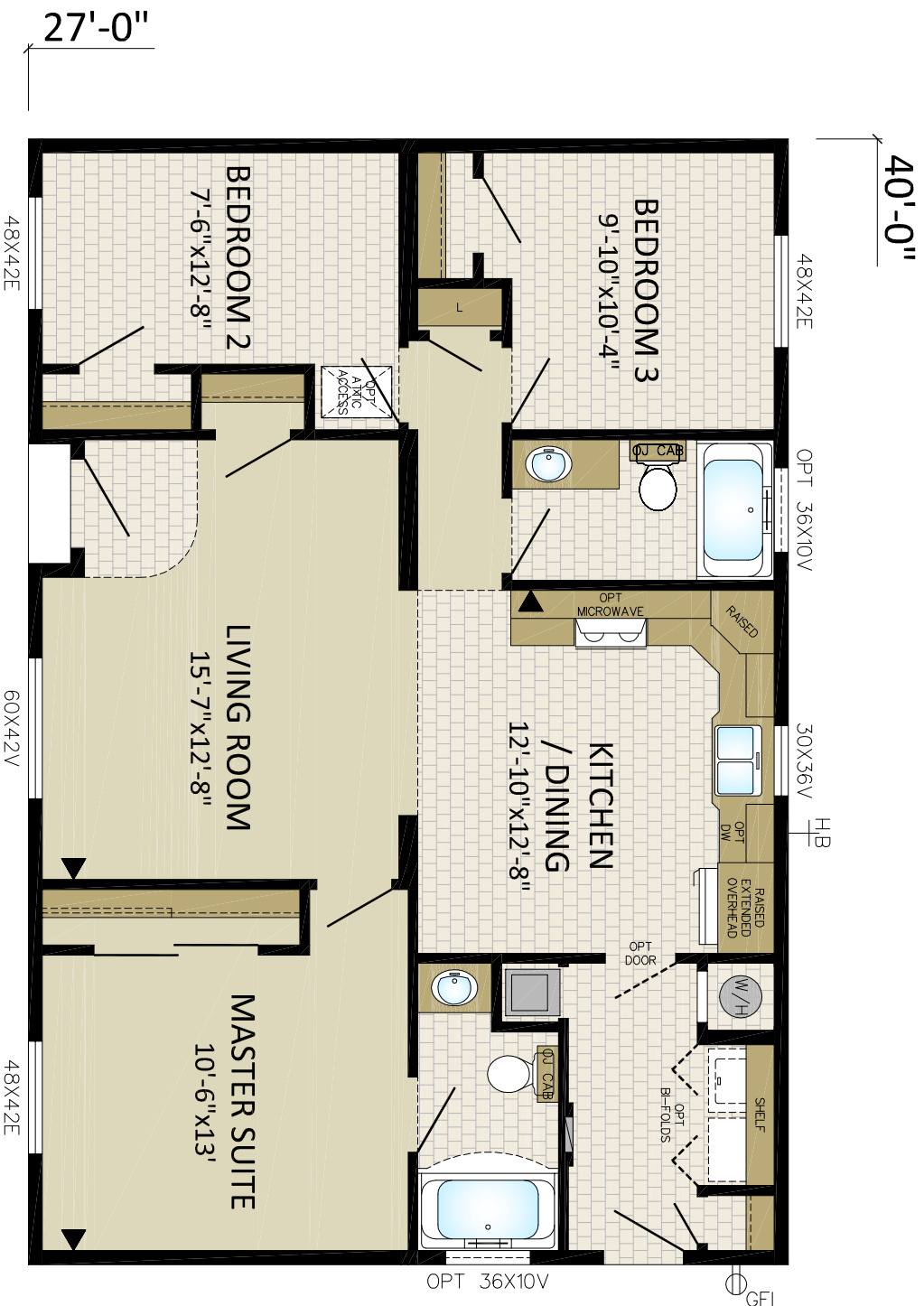


27CO4001
27'x40' - 1080sqft



MODULINE INDUSTRIES ULC.

P.O. BOX 190
1175 RAILWAY STREET
PENICTON, B.C. V2A 6K3
(250) 493-0122

DRAWN BY: RGS

DATE: 08/12/15

CHECKED BY:

NO. REVISIONS:

INITIALS:

DATE:

TITLE: **CORNERSTONE**

DRAWING NO. PENICTON

27CO4001

SERIAL NO.

STANDARD