



MODULINE INDUSTRIES U.L.C.
 P.O. BOX 190
 1175 RAILWAY STREET
 PENICTON, B.C. V2A 6K3
 (250) 493-0122

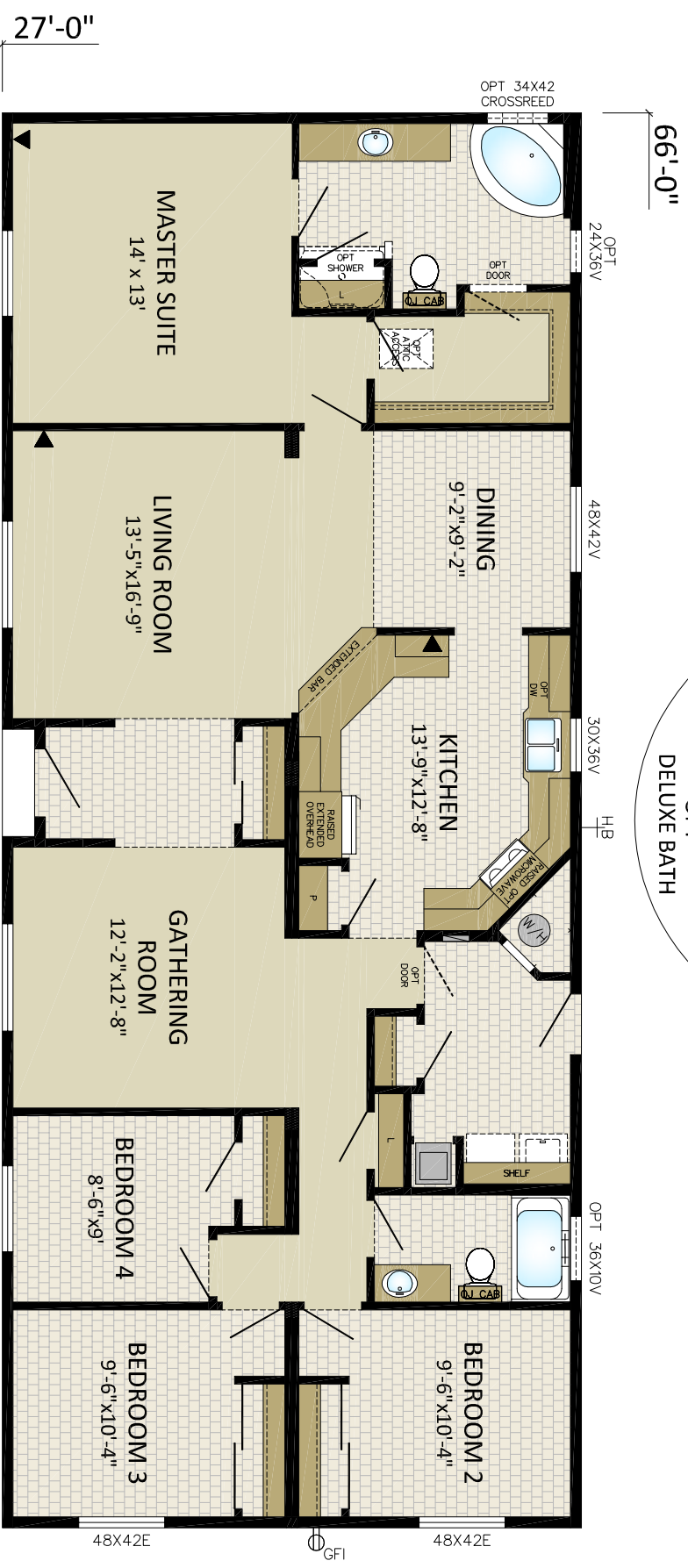
DRAWN BY: RGS
 DATE: 10/05/15
 CHECKED BY:

NO.	REVISIONS:

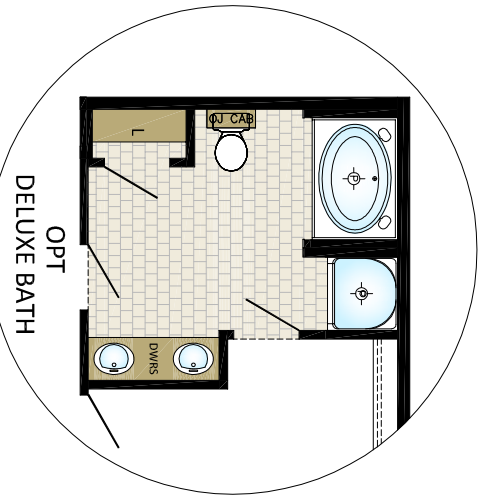
INITIALS: DATE:

TITLE: **CORNERSTONE**
 DRAWING NO. PENICTON
27C06603

SERIAL NO.
STANDARD



27C06603
27'x66' - 1782sqft
 66'-0"



requires
 2ft stretch option

48X42E GFI 48X42E